

FAVCO

CRANES, INC.
53-20 44th STREET
MASPETH, N. Y. 11378

STD 750



SPECIFICATIONS

ENGINE

G.M. 4-71N 284 Cu. ins. 148 B.H.P. @ 2100 R.P.M.

ALTERNATE

Caterpillar D-330T 160 B.H.P. @ 2200 R.P.M.

TRANSMISSION

Totally enclosed oil immersed gearbox, driving variable displacement piston type hydraulic pumps to hydraulic radial piston motors for hoisting and slewing and double acting hydraulic cylinders for luffing and external or internal climbing by hydraulic rams. The transmission provides infinitely variable speed and stepless acceleration and deceleration through fingertip light controls.

HOIST ROPE

700 ft. 15/16 in. dia. non-rotating 34 X 7, 110/120 tons tensile.

SLEWING

360° fully enclosed ball bearing race with machine cut gear and pinion drive.

WORKING DIMENSIONS

Max. static height 1000 ft.

Max. freestanding height 150 ft. to jib pivot pin.

Jib radius 130 ft.-150 ft.

Weight of internal climbing crane 70 tons (with 9 tower sections).

Min. distance through supporting floors 30 ft. (internal climbing).

WORKING SPEEDS

Hoist Speed 400 F.P.M. to 13,500 lbs.

Luffing Speed (Max. to Min. Radius) 75 sec. or 40 sec.

Slew Speed 1 R.P.M.

SHIPPING DETAILS (1 Ton = 2240 lbs.)

Machinery Deck: 25 ft. X 9 ft. X 11 ft. Weight 16.5 tons (including power unit).

Mast: 35 ft. X 9 ft. X 2 ft. Weight 2.5 tons.

Jib Sections: Butt 37 ft. X 7 ft. 6 in. X 8 ft. 6 in. Weight 8 tons.

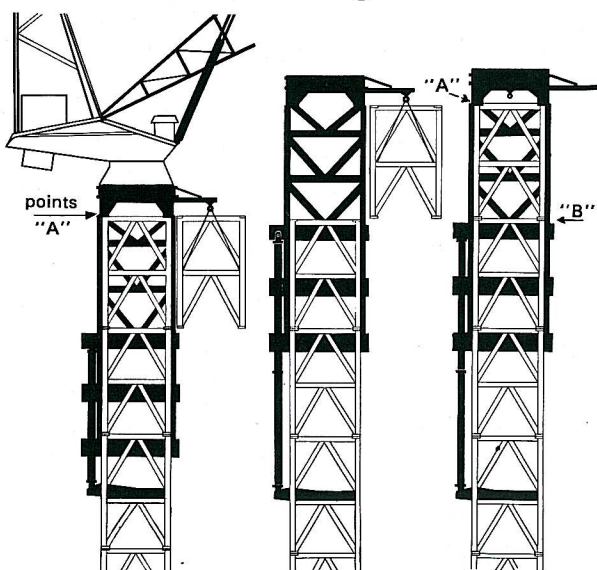
Middle 37 ft. X 7 ft. 6 in. X 8 ft. 6 in. Weight 3 tons.

Extension 36 ft. 6 in. X 7 ft. 6 in. X 8 ft. 6 in. Weight 2.5 tons.

Tower Sections: Ea. 10 ft. 3 in. X 8 ft. 8 in. Weight 2 tons.

Counterweight: Ea. 10 ft. X 3 ft. 6 in. X 9 in. Weight 5 tons ea.

External climbing detail



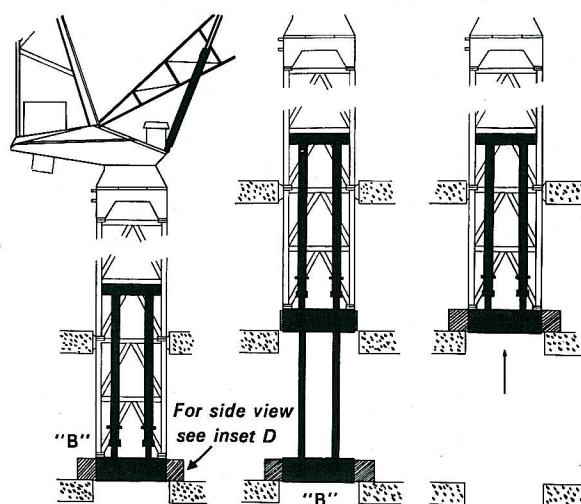
STAGE 1
 An additional tower section is lifted by the crane and suspended from the monorail. The bolts of the top tower section are removed from points "A".

STAGE 2
 The top section of the crane and the climbing frame are lifted by the hydraulic ram.

STAGE 3
 The new tower section is drawn into the climbing frame and bolted into place at points "A" and "B".

To climb down the reverse procedure is followed.

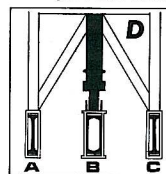
Internal climbing detail



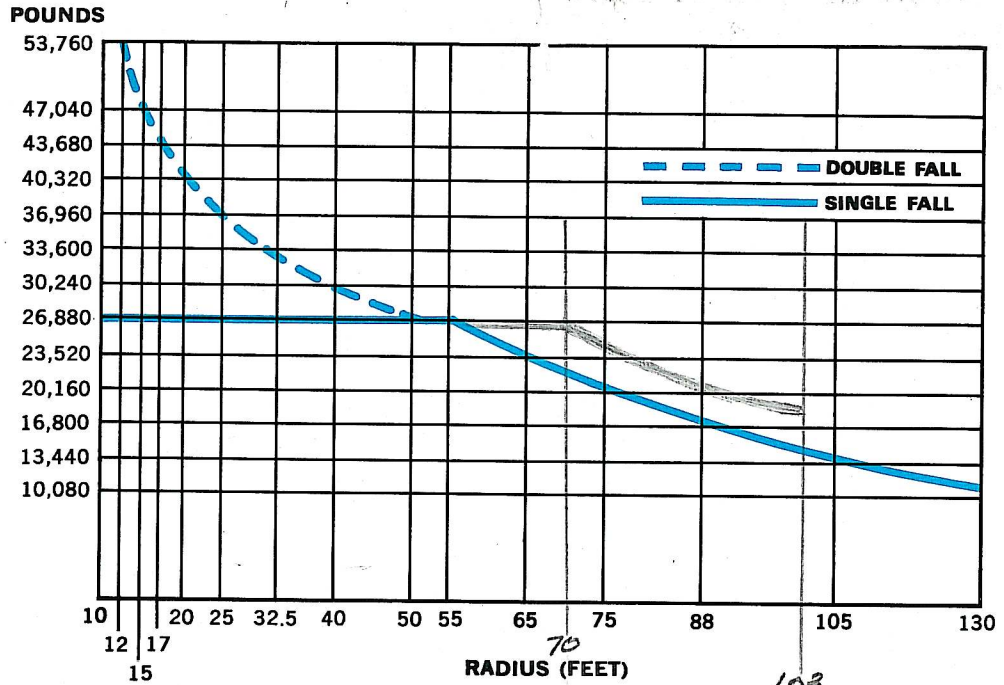
STAGE 1
 The internal section of beam "B" (drawn in black) is extended at both ends and supported on the building. The internal sections of beams "A" and "C" are retracted.

STAGE 2
 The crane and tower is lifted by the hydraulic rams

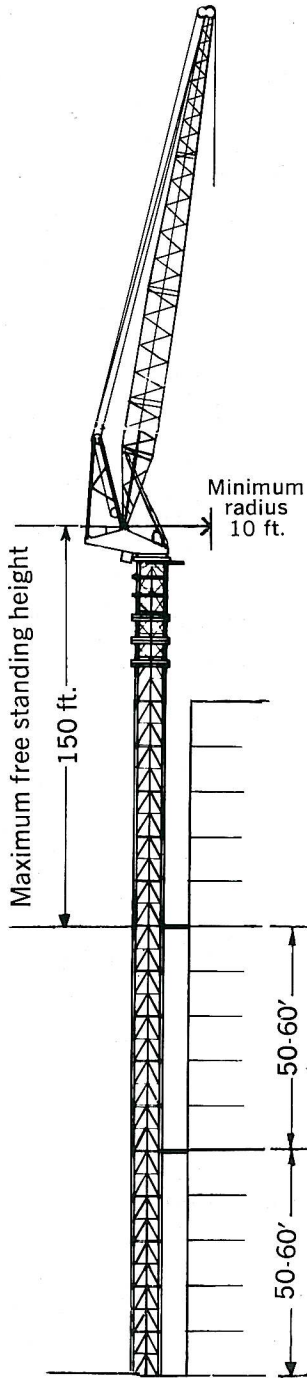
STAGE 3
 The internal sections of beams "A" and "C" are extended to support the crane. The internal sections of beam "B" are retracted and the hydraulic cylinders lift this beam until it is level with the other two.



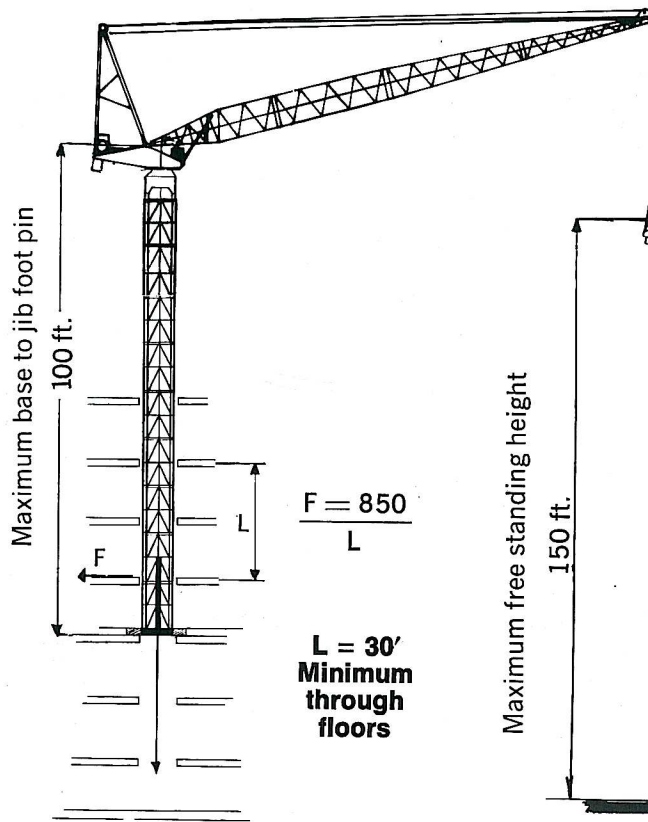
CRANES, INC.
53-20 44th STREET
MASPETH, N. Y. 11378



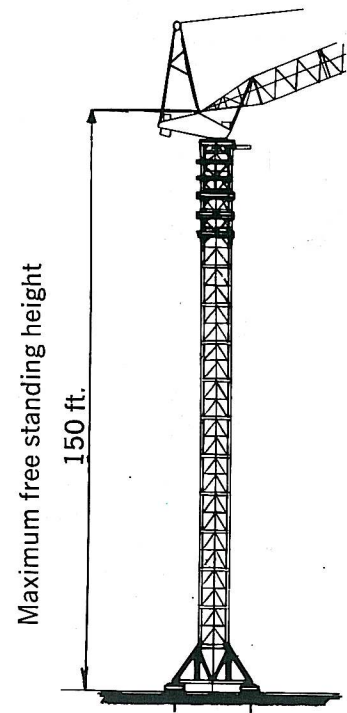
LOAD RADIUS DIAGRAM
Jib extensions available.



EXTERNAL CLIMBING



INTERNAL CLIMBING



RAIL MOUNTED

CRANES, INC.
53-20 44th STREET
MASPETH, N. Y. 11378

FAVCO

***superior in efficiency,
economy & versatility.***

- Diesel or electro-hydraulic powered
- Infinitely variable stepless speed control
- Continuous weighing of the load
- Hydraulic luffing
- Travelling counterweight for stability
- Fully interchangeable tower sections
- Continuous hydraulic oil filtration
- Fail-safe emergency hoist brake
- Universal application — external or internal hydraulic climbing — curve negotiating rail or barge mounting
- Exceptional stability
- Small minimum working radius

Distributed by

Boom Size	Load Radius	Boom Angle	1 PART OF HOIST LINE	2 PARTS OF HOIST LINE
107'	13	81.3	26,800	50,300
	14	80.7	26,800	48,000
	15	80.2	26,800	47,000
	16	79.6	26,800	45,000
	17	79.1	26,800	43,500
	18	78.6	26,800	42,500
	19	78.0	26,800	41,500
	20	77.5	26,800	40,300
	25	74.7	26,800	36,900
	30	71.9	26,800	34,400
	35	69.1	26,800	32,100
	40	66.2	26,800	30,200
	50	60.2	26,800	26,800
	60	53.8	26,000	
	70	46.8	22,700	
	80	39.9	20,100	
	90	29.4	17,600	
	100	15.3	15,600	

Boom Size	Load Radius	Boom Angle	1 PART OF HOIST LINE	2 PARTS OF HOIST LINE
137.5'	13	83.2	26,800	50,300
	14	82.8	26,800	48,000
	15	82.4	26,800	47,000
	16	82.0	26,800	45,000
	17	81.5	26,800	43,500
	18	81.1	26,800	42,500
	19	80.7	26,800	41,500
	20	80.3	26,800	40,300
	25	78.2	26,800	36,900
	30	76.0	26,800	34,400
	35	73.9	26,800	32,100
	40	71.7	26,800	30,200
	50	67.2	26,800	26,800
	60	62.6	25,200	
	70	57.8	21,800	
	80	52.7	18,700	
	90	47.3	16,300	
	100	41.3	14,200	
	110	34.6	12,500	
	120	26.3	11,200	
	130	15.2	10,000	

Boom Size	Load Radius	Boom Angle	1 PART OF HOIST LINE
158.5'	13	84.1	26,800
	14	83.8	26,800
	15	83.4	26,800
	16	83.0	26,800
	17	82.7	26,800
	18	82.3	26,800
	19	81.9	26,800
	20	81.6	26,800
	25	79.7	26,800
	30	77.9	26,800
	35	76.0	26,800
	40	74.2	26,800
	50	70.4	26,800
	60	66.5	20,700
	70	62.5	16,800
	80	58.3	14,200
	90	54.0	12,300
	100	49.4	10,300
	110	44.4	8,900
	120	39.0	7,800
	130	32.8	6,700
	140	25.4	5,900
	150	15.2	4,900